



# SUIT CUSTOMIZATION TUTOR



## CREATE YOUR SPECIAL **TECNICA EVO**

**IA01859**  
FIA HOMOLOGATED



**GREY AREA:**  
CHOOSE THE COLOUR FROM  
PALETTE 1



**PINK AREA:**  
CHOOSE THE COLOUR FROM  
PALETTE 3



**WHITE AREA:**  
CHOOSE THE COLOUR FROM  
PALETTE 1  
**FOR SHOULDER STRIPES  
A DIFFERENT COLOUR  
MUST BE USED**



**CYAN AREA:**  
CHOOSE THE COLOUR FROM  
PALETTE 2



**YELLOW AREA:**  
CHOOSE THE COLOUR FROM  
PALETTE 4



**GREEN AREA:**  
CHOOSE THE COLOUR FROM  
PALETTE 5



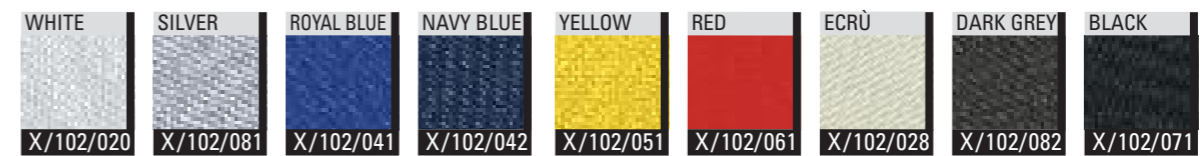
**PALETTE 1 SHINE FABRIC** 3 LAYERS - 270 gr/m<sup>2</sup>



**PALETTE 3 STRETCH DRY SYSTEM FABRIC**



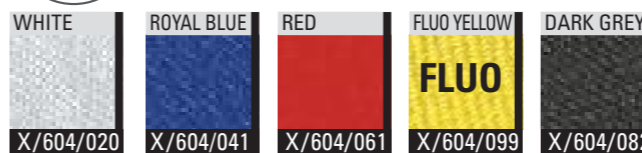
**PALETTE 3 INTERLOCK FABRIC**



**PALETTE 4 WRIST AND ANKLE CUFFS FABRIC**



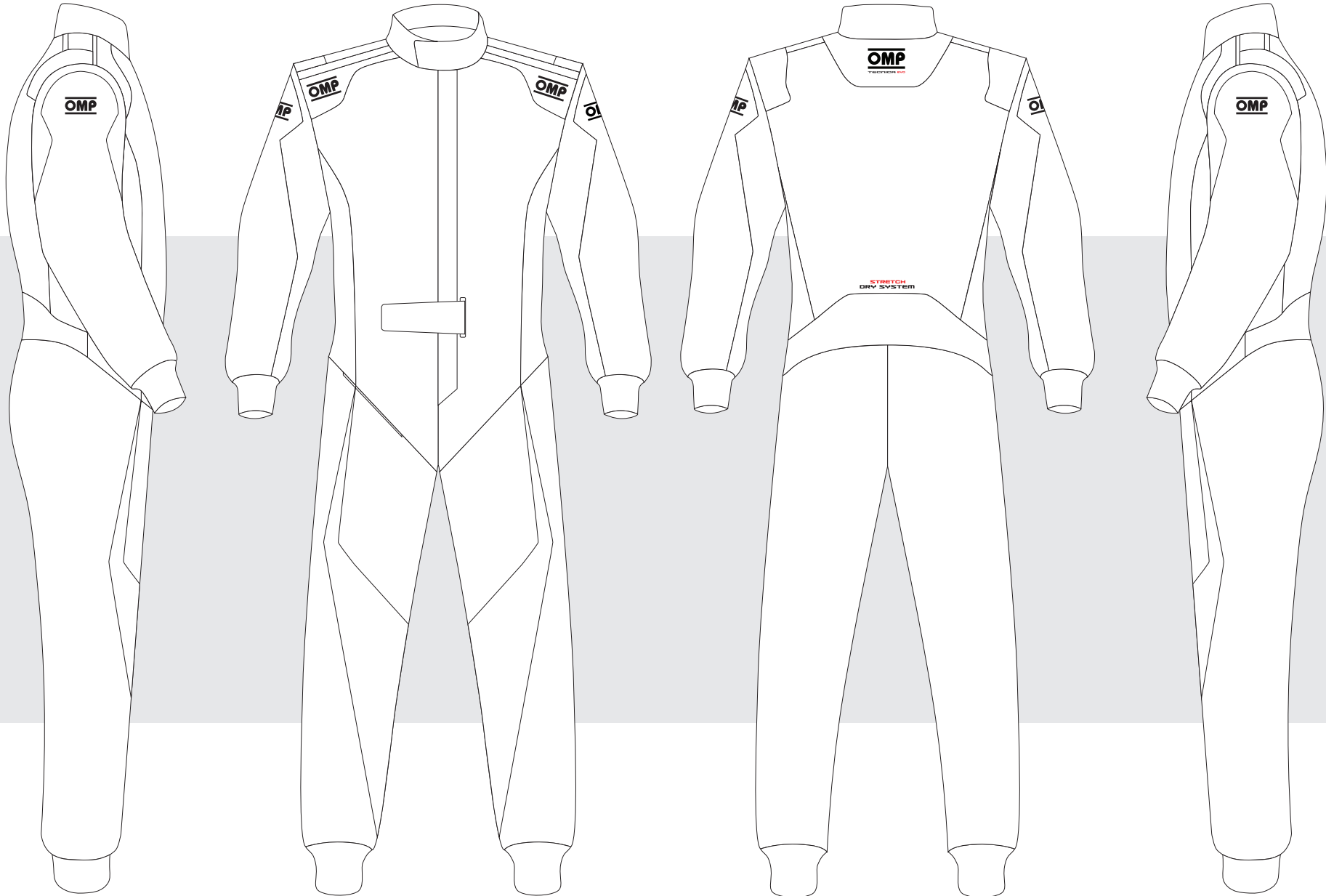
**PALETTE 6 DRY SYSTEM FABRIC**





CUSTOMER: \_\_\_\_\_ TEAM: \_\_\_\_\_ DRIVER NAME: \_\_\_\_\_

CUSTOMIZED SUIT CONFIGURATOR



TECNICA evo

OMP\_IA01859\_01\_2018

IA01859

DATE: \_\_\_\_\_ REV. \_\_\_\_\_

© OMP RACING SPA - ALL RIGHTS RESERVED

THIS DESIGN IS THE INTELLECTUAL PROPERTY OF OMP RACING SPA - ANY REPRODUCTION WITHOUT PERMISSION WILL BE PROSECUTED TO THE FULLEST EXTENT OF THE LAW. By approving this sketch, the customer acknowledges that, during the process of manufacturing, variations may occur in colors and other minor aspects, because of the use of different technologies for the acquisition and reproduction of images, and for the making of the suit itself. OMP is not responsible for such variations and deviations. For further information: www.ompracing.com